

FOR LEASE

PARK PLAZA SUITE 340 AVAILABLE FOR LEASE!

95 St. Paul Street, Suite 340, Burlington, Vermont



95 St. Paul Street is a conveniently located office building in central downtown Burlington. It is part of the Park Plaza mixed use office & retail complex. It is located directly across from City Hall Park. The building is approximately 30,000 sf and 4 stories tall and provides on site parking in it's attached 2 level parking garage. The Church Street Marketplace is a short block away. Suite 340 is a lovely smaller office suite, with good light, nice views, and in a secure building. Three private offices with Saint Paul Street views, large storage or conference room, and coat closet.

SIZE:

1,103 SF

USE:

Office, medical office, service retail

PRICE:

\$14.50/SF, NNN (\$9.38/SF; Electricity \$1.55/SF), Gas included

AVAILABLE:

Immediately

PARKING:

On-site in private garage for monthly fee

LOCATION:

Downtown Burlington

Information contained herein is believed to be accurate, but is not warranted. This is not a legally binding offer to sell or lease.



For more information, please contact:

YVES BRADLEY

802-363-5696

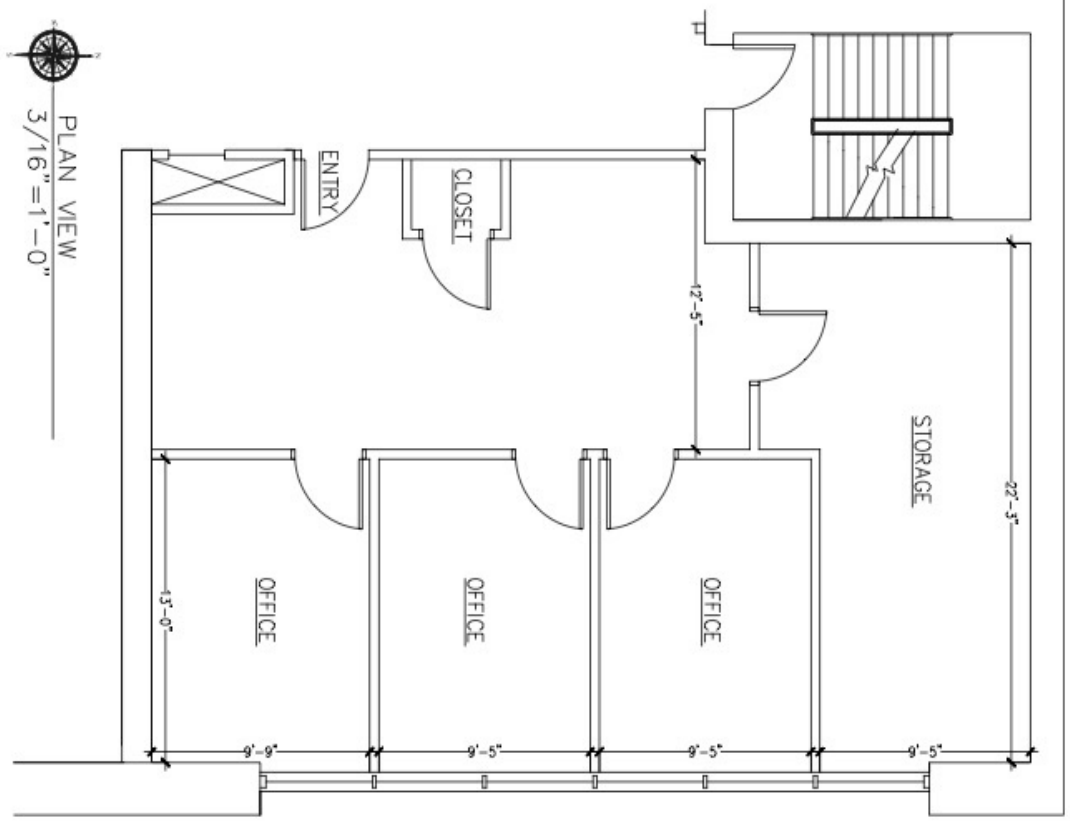
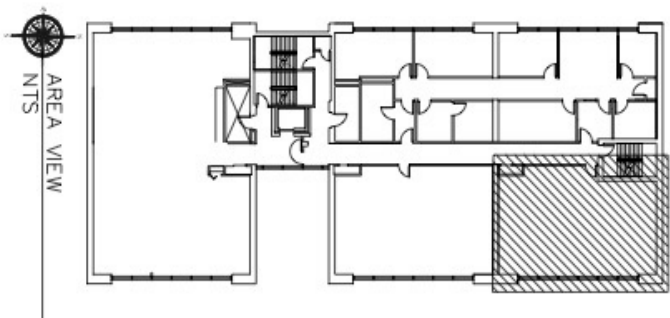
yb@vtcommercial.com

208 FLYNN AVENUE, STUDIO 2i

BURLINGTON, VT 05401

www.vtcommercial.com





A-3	DATE	10/27/2014
	SCALE	AS NOTED
	PROJECT	AS NOTED
	REVISIONS	
REVISION 1		
REVISION 2		
REVISION 3		
REVISION 4		
REVISION 5		
REVISION 6		
REVISION 7		
REVISION 8		
REVISION 9		
REVISION 10		

PROJECT:	THIRD FLOOR
LOCATION:	95 ST. PAUL ST. - BURLINGTON, VT
DRAWN BY:	FRANKS BY
CHECKED BY:	



ICV CONSTRUCTION, INC.
30 MAIN STREET, SUITE 401
BURLINGTON, VT 05401

