



Discover The Shops at

Catamount Run



CATAMOUNT RUN

Your Vibrant New Community Hub

Welcome to the Vermont's newest mixed-use neighborhood, where convenience meets community in an unparalleled setting. Developed in partnership with the University of Vermont, **The Shops at Catamount Run** offer an exciting array of retail spaces, creating a dynamic destination for residents, students, and professionals alike.

Choose from a variety of retail spaces designed to suit your business needs, whether you're establishing a flagship store, boutique shop, restaurant, or specialty service. Flexible leasing options and modern facilities ensure your business thrives in this vibrant new downtown setting.

Quick Project Facts

Retail	32,500 SF
Parking	1,140 Spaces
	419 Surface
	506 Garage
	215 On-Street
Anchors	Trader Joe's
	Healthy Living Market
	Library
	UVM Housing
Residential	715 Units
	620 Beds - University Housing (UVM)
	227 Units - Healthcare Professionals (UVM Medical Center)



Location Map



**The Shops at
Catamount Run**



A Neighborhood Designed for You

NEIGHBORHOOD DEMOGRAPHICS
BURLINGTON-SOUTH BURLINGTON MSA



230,089
POPULATION



38
MEDIAN AGE



\$86,183
MEDIAN HOUSEHOLD
INCOME



48%
HOUSEHOLDS ABOVE
\$100K/YR



8.75%
MEDIAN INCOME
GROWTH (2022)



98.3%
EMPLOYMENT



The Shops at Catamount Run Site Plan



Merchandising Plan Market Street - East



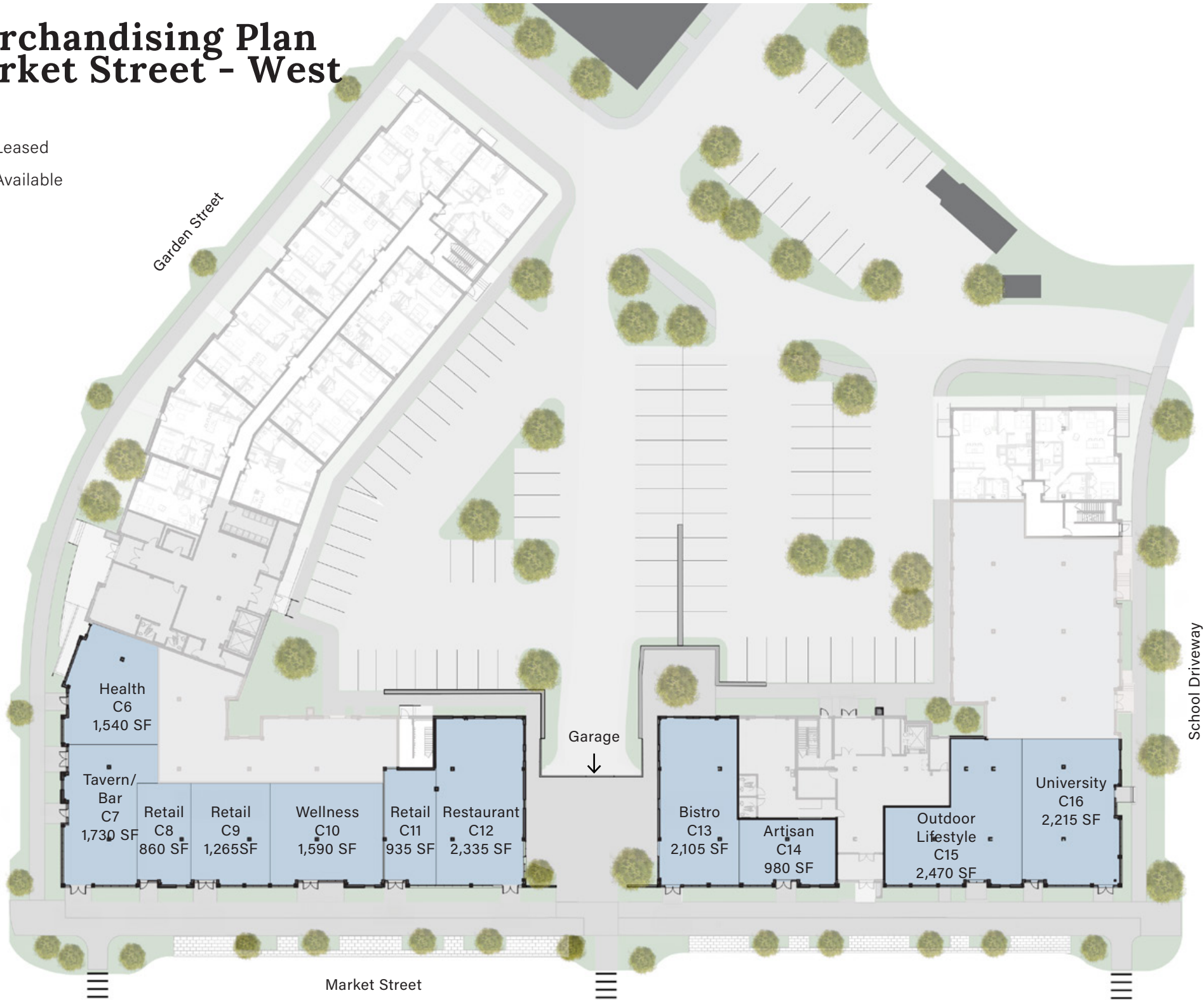
Key

- Leased
- Available

Merchandising Plan Market Street - West

Key

- Leased
- Available



PROJECT PARTNER



With an annual operating budget exceeding \$500 million and a dedicated staff of over 3,000 employees, UVM offers a dynamic educational experience to more than 13,000 students.

As a pillar of the Burlington area, UVM is dedicated to fostering a sense of community through collaborative projects and partnerships, enhancing both academic and local life. The recent investment in Catamount Run, a collaboration between UVM and Snyder-Braverman Development, exemplifies this commitment by integrating educational and community-focused initiatives, further strengthening its role as a leader in fostering a vibrant, inclusive, and forward-thinking environment.

University of Vermont

Quick Facts

Enrolled Students	13,000+
Employees	3,300+
Operating Budget	\$780M
Expenditures on Salaries	\$134M
Funds Invested in Catamount Run/City Center	\$26M
Distance to UVM	Less than 1 Mile
Catamount Run	324 Residential Units
	620 Beds
	33,500 SF Retail



PROJECT PARTNER



As the region's leading healthcare provider, the University of Vermont Health Network (UVMHN) operates with an annual budget of approximately \$2 billion and employs over 15,000 dedicated staff members.

To address its expanding housing needs, UVMHN has teamed up with Snyder-Braverman to develop a new residential community featuring 227 apartments specifically for healthcare professionals. Strategically located just 1.5 miles from the University of Vermont Medical Center campus, this development significantly reduces commute times and enhances employees' quality of life, ultimately boosting job satisfaction and retention.

This new housing initiative is designed to perfectly align with UVMHN's objectives by offering modern, convenient living options within walking distance of a vibrant array of shopping and amenities.

UVM Health Network

Quick Facts

Annual Operating Budget	\$2 Billion+
Employees	15,000+
Housing in City Center	227 Units for Healthcare Workers
Investment in City Center Projects	\$9+ Million
Distance to UVM Health Network	1.5 Miles



PROJECT PARTNER/DEVELOPER

SNYDER-BRAVERMAN DEVELOPMENT LLC

A Vermont based development firm focused on residential, mixed use, and neighborhood community development. Together, the company's partners, Chris Snyder and Ken Braverman have unrivaled experience designing, permitting, and developing large scale projects in Vermont. Collectively, the partners have permitted and managed the development of over 2,000 residential units in Vermont. Snyder-Braverman was created by its partners to leverage each of their respective skills and combined real estate expertise to successfully advance projects in Vermont.

Currently, Snyder-Braverman's primary focus is the development of South Burlington City Center; a 27-acre mixed-use new town center approximately 1.5 miles from the University of Vermont. To date, within the project-area the partnership has successfully developed:

- 181 Residential Units - UVM Medical Center Housing
- 137 Residential Units - UVM Graduate & Faculty Housing
- 33,500 SF - Retail / Commercial
- 142 Residential Units - Mixed Income Housing
- 167 Residential Units - UVM Student Housing *Under Construction*

Snyder-Braverman plans to remain actively involved as long term owners and operators of Catamount Run.





CITY CENTER



southburlington
VERMONT



The Shops at Catamount Run are situated in the South Burlington City Center neighborhood. This development is a key component of the City's long-term vision to create a new, walkable downtown area and mixed-use town center.

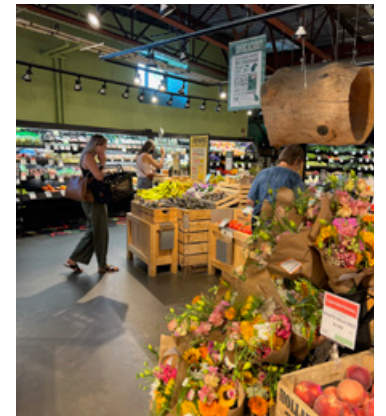
In support of this vision, the City of South Burlington has invested in the construction of Market Street, City parks, and a new City Hall and Public Library on-site. Additionally, the City plans to host public events and activities in this area to promote and enhance the appeal of the shops and restaurants within the City Center.



The Shops at Catamount Run



Ready to make Catamount Run your new neighborhood? Contact us today to learn more about available retail spaces and leasing opportunities. Your future awaits at **The Shops at Catamount Run**—where life, commerce, and community converge in the Burlington area's premier mixed-use destination.



Catamount Run

Retail Leasing

Snyder-Braverman Development, LLC
802-985-5722

